



5XFJ Series Seed Grading Machine

It can grade all types of grains, seed and bean.

www.synmec.com

ISO 9001:2008 REGISTERED



SGS



BUREAU VERITAS



SYNMEC

The world top Manufacturer Adviser for Grain Cleaning Seed Processing Solutions

5XFJ Series Seed Grading Machine



The 5XFJ series grain & seed grading machine which equipped one bucket elevator at front, and it drive by two vibratory motors that lead to long life cycle and very low maintenance cost. It can grade all types grain & seed just need changing the inside sieves.

WIDE RANGE FOR USE

- Wheat
- Maize
- Rice
- Sunflower Seed
- Soybean
- Adzuki
- Green Peas



Part of Seed Grading Machine

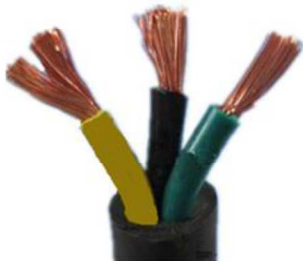


■ Bucket elevator

Used to transfer materials (grains). Available in both fixed and movable version to adapt different working environment.

Feature

It has compact structure, user friendly interface, easy to maintain, energy saving, easy to clean, efficiently avoid mixture.



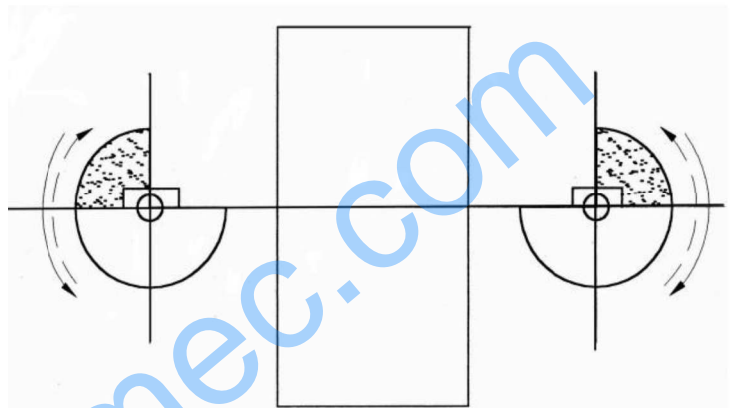
■ Wire

The wire is 100% copper, which lead to long using life.



Main Sieving Trunk:

It is drive by two vibratory motors that lead to long life cycle and very low maintenance cost



This machine can grade all types' grain & seed, just need changing the inside sieves.

5XFJ Series Grain & Seed Grading Machine

Model	Capacity (T/H)	Power (KW/H)	Weight	Dimension	Available sieve layer
5XFJ-3	3	1.25	700	3500*1900*2600	2-3
5XFJ-5	5	1.49	900	3900*2150*2800	2-4
5XFJ-7.5	7.5	1.85	1200	3900*2300*2800	3-5
5XFJ-10	10	2.25	1400	3900*2300*2800	3-6
5XFJ-20	20	5.27	1800	3900*2600*3000	4



Scattered grain feed into sieving trunk for separating. In this part, grain / seed was graded by galvanize sheet with different holes in each layer. Finally graded seed will discharge from different outlets.

Good seed outlets





It's very convenient to pull the sieves out. Client can change the sieve easily when cleaning other grain or seed.

The sieves inside are made of durable galvanized steel sheet. We will equip suitable sieve hole according to client's raw material.

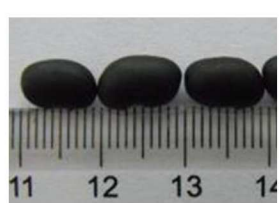
In order to choose perfect sieves, the seed sample (raw material contains impurities) or seed measuring photo are needed after clients placed order. Note that one set sieves are equipped as standard supply, only used for one species seed.

Note: Stainless steel sieve is available.

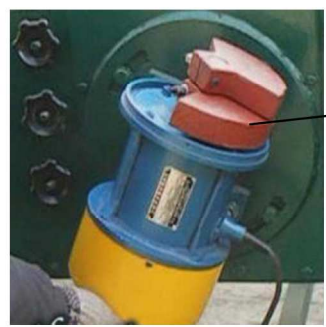
Knobs and plates press the sieves firmly



Rubber ball
for sieve clog
cleaning

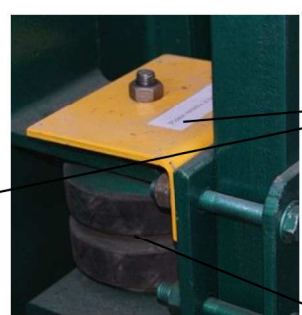


Famous brand motor which certified by the nation. It has win an excellent reputation for both its high quality and favorable price.



Two fan shaped metals in two ends of vibration motor set the vibration amplitude.

Engineer will set it before delivery. Not recommend setting by users.



Fixing plates protect the rubber springs in transportation.

Please remove them before start the machine.

Rubber spring support sieving trunk

We are the best choice for you!

Factory view



Office Building

Workshops



We have professional manufacturing equipment!

Drilling and milling machine	CNC lathe	Laser cutting machine
		
Plasma cutting machine	Bending machine	Shearing machine
		

We can provide over sea machine assembly and staff training services!



We have strong production capacity!



One time produce 6 sets 5XZD-15AC



One time produce 33 sets QSX-85 Destoner



One time produce 40 sets 5XZ-6 Gravity Separator



One time produce 30 sets 5BY-5B Seed Coating Machine

We have customers all over the world!



Healthy Grain, Pretty Beans, Strong Seed. SYNMEC

We serve for



Shijiazhuang SYNMEC International Trading LTD. and Hebei RUIXUE Grain Selecting Machinery Limited have all the copyright of the information and pictures provided in this leaflet. We have all the rights to do necessary adjustments on the product, and these changes may not reflect on the leaflet at the moment of production.

Address:
Head office: 15th Guangan Street,
Shijiazhuang City, Hebei Province,
China 050011
Manufacture: Huaihe Industry Park,
Hongqida Street, Shijiazhuang City,
Hebei Province, China 050000

Tel: +86 311 676663887
+86 311 89901997
Fax: +86 311 67663887
Mobile: +86 13273161281 (Tony)
Whatsapp: +86 13803340060
Imo: +86 13803340060
Wechat: 13803340060
Email: tony@synmec.com