

ISO
9001:2008
REGISTERED



SGS



BUREAU
VERITAS



www.synmec.com

SYNMEC

5XZ-5A GRAVITY SEPARATOR

To separate materials that in similar size but different in specific weight



SYNMEC

The world top Manufacturer Adviser for Grain Cleaning Seed Processing Solutions



Application:

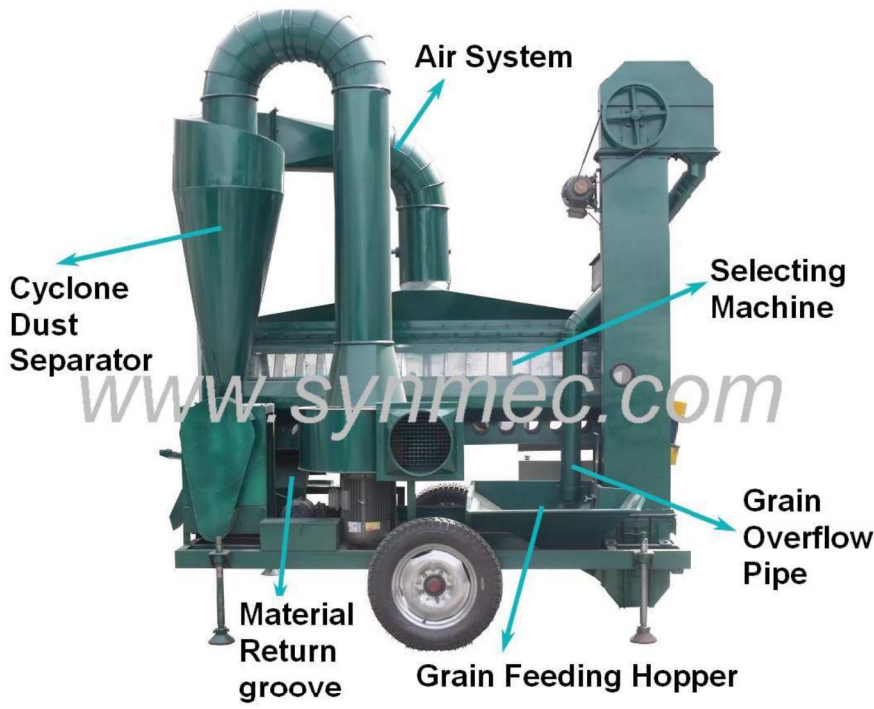
5XZ-3A gravity separator is used to separate seed and grain with same size but difference in specific weight.

To remove partially eaten, immature, insect damaged sick seed and moldy seed from your grain or beans.

Widely used in seed and grain industry, with best performance for wheat, maize, corn and others.

Specification:

Model	5XZ-5A
Capacity (count by wheat)	5000 kg/h
Power	9.62 KW
Dimension of sieve	2000*625 mm
Amplitude	4mm
Purity	>98%
Percentage of broken seed	<0.2%
Dimension(mm)	4000*1900*3100 mm
Weight(kg)	1600 kg



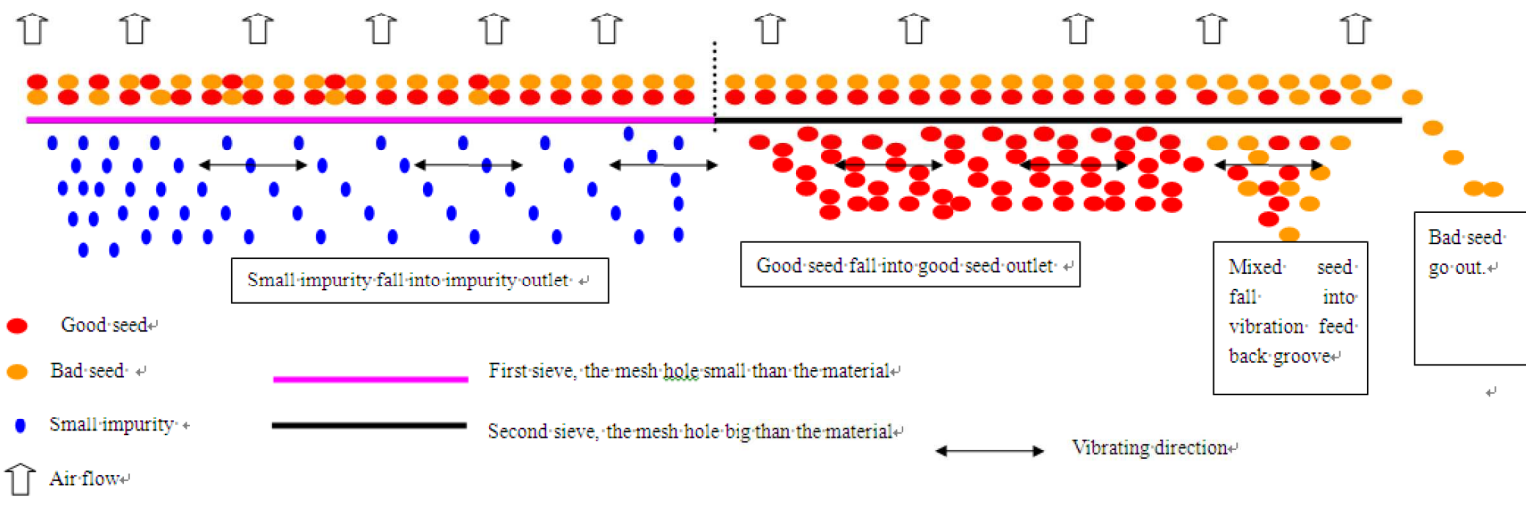
Motor Details:

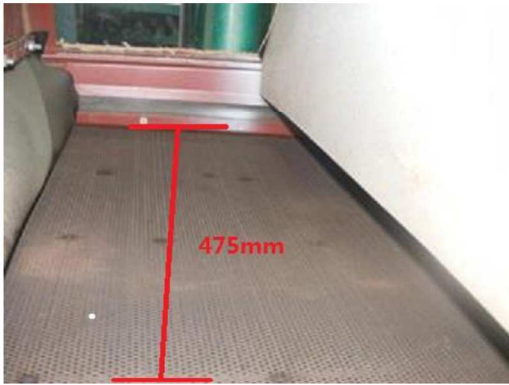
- Vibration Motor:**
YZU-6-6, 0.37kw, 960r/min
- Air Blower Motor:**
Y2-B35-2, 7.5KW, 2880RPM
- Air locker Motor:**
0.75kw
- Motor for grain return groove:**
YS-7114, 0.25KW, 1400 r/min.
- Motor for Elevator:**
Y90S-6, 0.75KW 960r/min.

The 5XZ-5A has Cyclone Dust Separator, which will collect dust and light impurities more sufficient, and is environmental friendly type.

Introduction of working process:

By air aspiration and sieve oscillation, seed is fluidized and stratified.
 Heavy seed sink into the sieve bottom layer, while light seed suspend to the top layer.
 After stratified, seed go forward to the discharging part.
 Bottom layer good seed and mixture quality seed fall through the sieve discharge from different outlets successively.
 Top light seed with bad quality was discharge directly.
 Mixed quality seed in the middle layer fall through sieves and return back by vibrate feeding groove.





Inside Sieve Size



Vertical air chamber

The special shape of the air chamber makes air flows more evenly and uniformly, better for light impurity suction and stratifying of seed.



Cyclone Dust Separator

For collect dust and keep the working environment clean.

Advantage of 5XZ-5A Gravity Separator on process wheat:

Our 5XZ-5A Gravity Separator can remove all bad wheat, wild oats, wild barley and aegilops tauschii from the wheat. This is the unique machine which can achieve this function.



bad wheat



wild oats

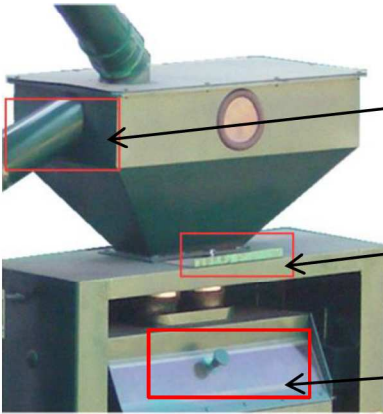


wild barley



aegilops tauschii

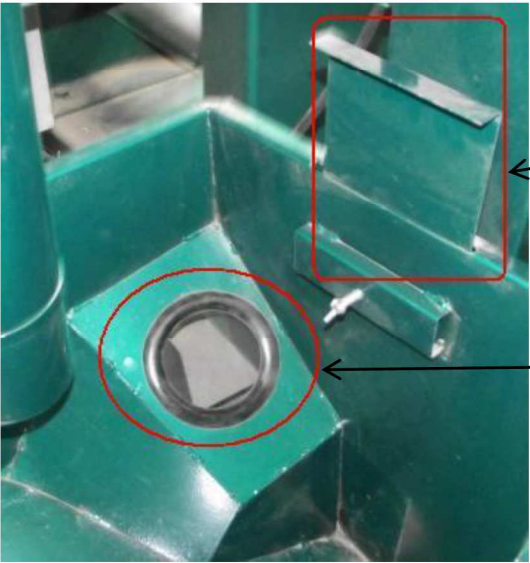
Adjustment:



When the grain over-feeding into the hopper, there is an over flow pipe makes the grain back to the inlet of bucket elevator.

The Insert Plate under Inlet Hopper can control the feeding volume.

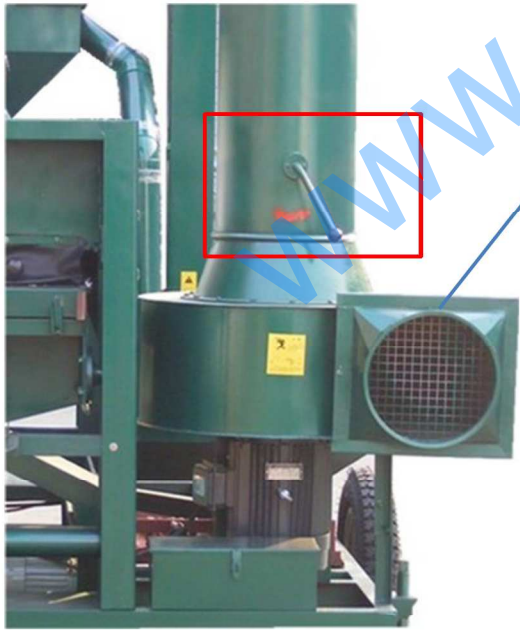
Inside have a buffer plate, which ensure grain fall down to sieves evenly.



The elevator hopper adjusting plate is used to adjust grain feeding speed.

And the observe window is used to keep watching the volume of return mixed grain to make them flow smoothly.

Air Blower: 4.5A, 7.5KW.



Air Adjusting handle to control the air volume produced from air blower.

16 air adjusting baffle plates will be adjusted according to selection results to control stratified of heavy and light seeds.

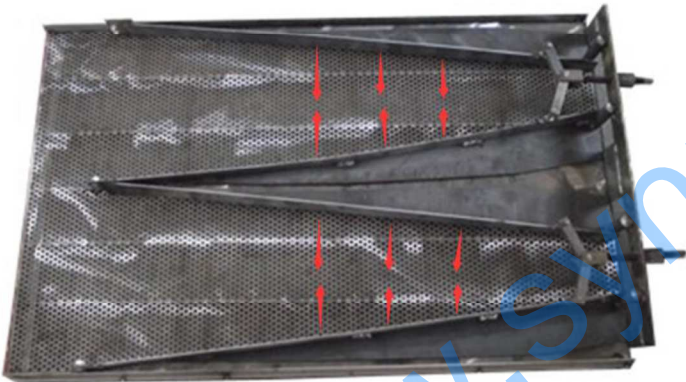


This is the inside sieve set.



The front sieve of Gravity Separator.

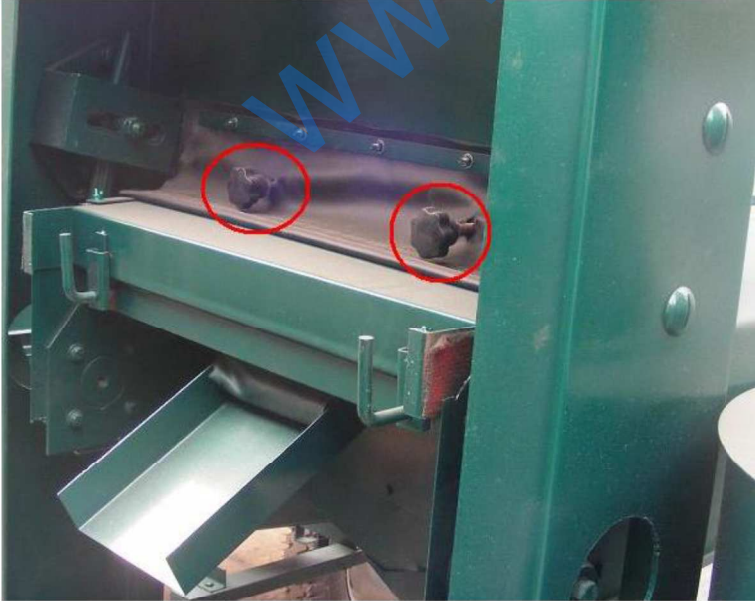
By the air aspiration and sieve oscillation, grain seed will finish layering on front sieve, then seed will go forward to back sieve for separation.



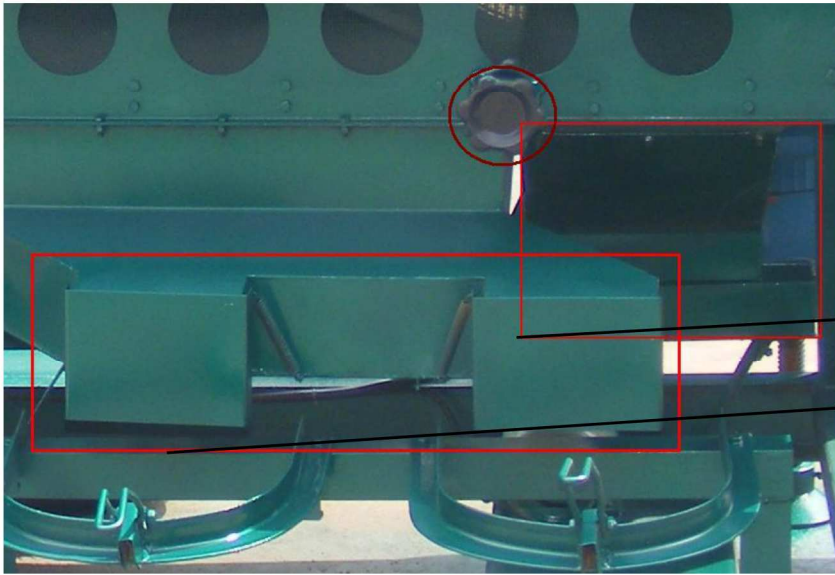
The back sieve of Gravity Separator.

The triangle gap can be adjusted according to different material.

Bad seed will be separated from good seed and discharge from different outlet.



The two black adjusting handles is end of back sieve, it is used to adjust the triangle gap size, lead to control the separation of mixed grain and light grains while control the flow volume of light grains.



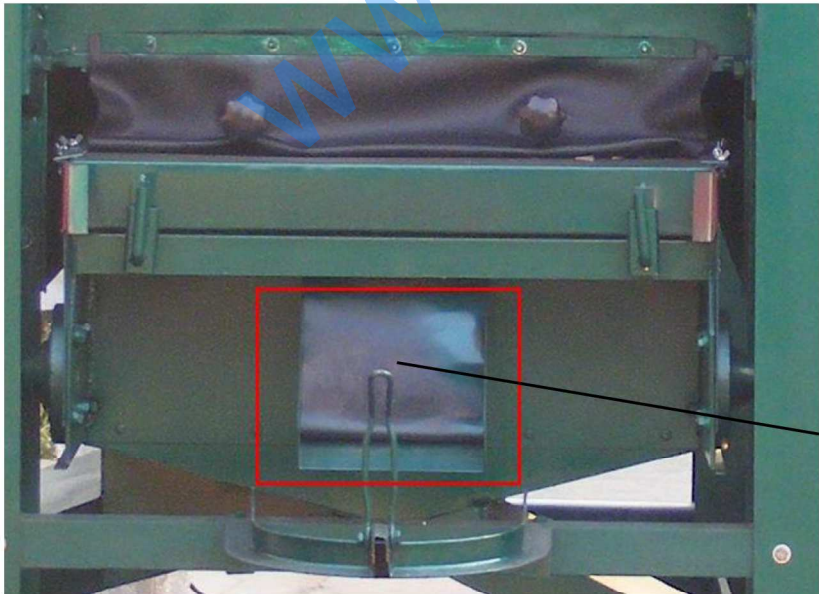
The above outlet is **outlet for good seed, and there are two sack holders under it.**

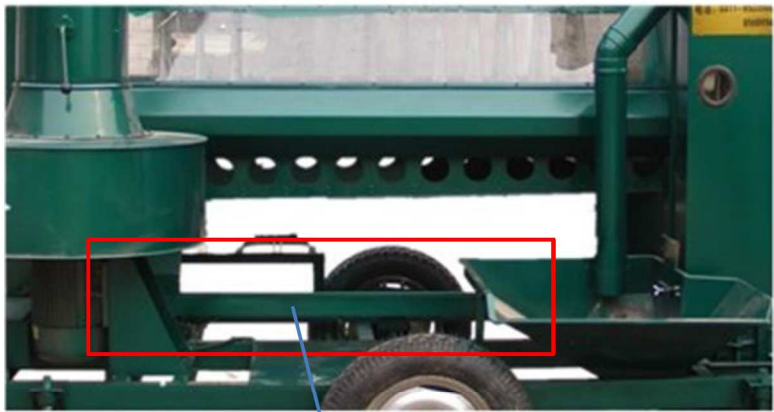
From top to Bottom are adjusting handle, **outlet of mixed seed** and **outlets of good seed.**

The black handle is called **material separation baffle plate adjusting handle**, it is used to adjust separation point of heavy seed and mixed seeds.

Under the outlet of good seed, there are sack holders which use to hold bags to fill in grain.

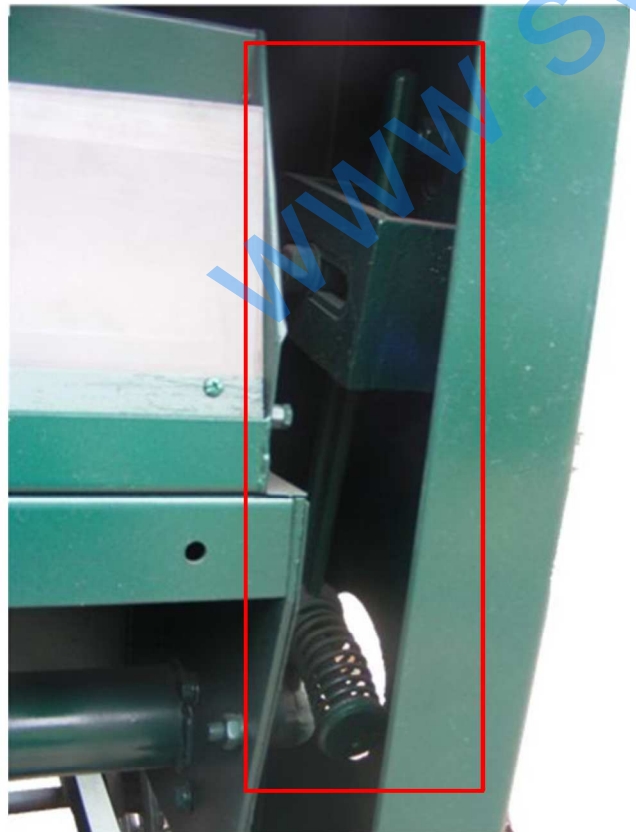
The grain from the outlet of mixed seeds will flow into grain returning groove and flow back into inlet hopper of elevator for second time selection.





Grain Returning Groove

The grain seed which mixed good and bad seed will flow from this groove and back into inlet hopper of Gravity Separator for second time selection.



Damping mechanism:

Which can balance the vibrating force to make working steady,

We are the best choice for you!

Factory view



Office Building

Workshops



Inside of workshop

We have professional manufacturing equipment!

<p>Drilling and milling machine</p>	<p>CNC lathe</p>	<p>Laser cutting machine</p>
		
<p>Plasma cutting machine</p>	<p>Bending machine</p>	<p>Shearing machine</p>
		

We can provide over sea machine assembly and staff training services!



We have strong production capacity!



One time produce 6 sets 5XZD-15AC



One time produce 33 sets QSX-85 Destoner



One time produce 40 sets 5XZ-6 Gravity Separator



One time produce 30 sets 5BY-5B Seed Coating Machine

We have customers all over the world!



Healthy Grain, Pretty Beans, Strong Seed. SYNMEC

We serve for



Shijiazhuang SYNMEC International Trading LTD. and Hebei RUIXUE Grain Selecting Machinery Limited have all the copyright of the information and pictures provided in this leaflet. We have all the rights to do necessary adjustments on the product, and these changes may not reflect on the leaflet at the moment of production.

Address:
Head office: 15th Guangan Street,
Shijiazhuang City, Hebei Province,
China 050011
Manufactory: Huaihe Industry Park,
Hongqida Street, Shijiazhuang City,
Hebei Province, China 050000

Tel: +86 311 676663887
+86 311 89901997
Fax: +86 311 67663887
Mobile: +86 13273161281 (Tony)
Whatsapp: +86 13803340060
Imo: +86 13803340060
Wechat: 13803340060
Email: tony@synmec.com