

SYNMEC

5XZD-15AC Grain Cleaner & Grader

Primary cleaner removes light impurity, small impurity and big impurity.

www.synmec.com

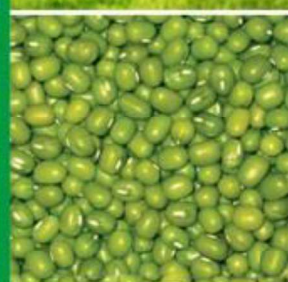
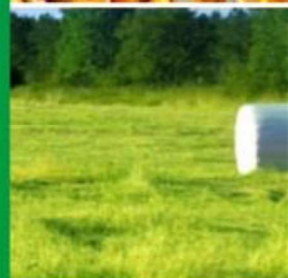
ISO
9001:2008
REGISTERED



SGS



BUREAU
VERITAS



SYNMEC

The world top Manufacturer for Grain Cleaning
Adviser Seed Processing Solutions

INTRODUCTION

5XZD-15AC Grain Cleaner is Our company developed NEW model movable grain cleaning machine, which design by Australian engineer (Mr. Dean Frahn), dedicated in bulk grain cleaning for west world market.

It has high mobility, large processing capacity, international high electrical standards and machine manufacture, unique design features. It's the best grain cleaning equipment for Australia, USA, Canada, Brazil and other bulk grain processing market.



Designer Mr. Dean Frahn



Model	5XZD-15AC
Capacity	20000 kg/h
Power	10.45 KW
Dimension (L*W*H)	5140*2340*3820mm
Weight	3000 kg

Working Principle

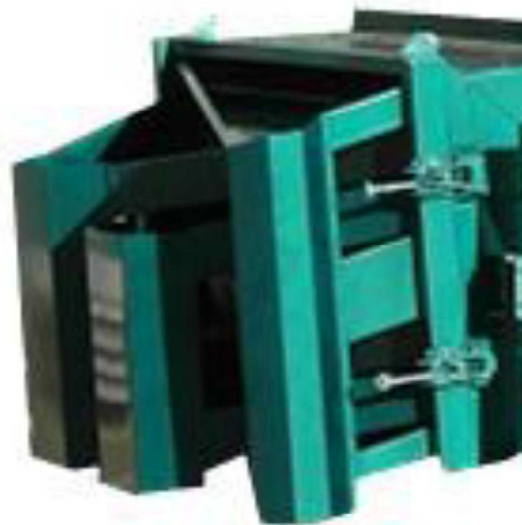
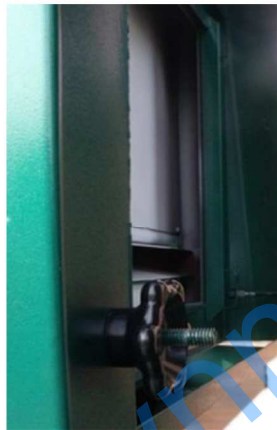
Load grain into the hopper on top by auger or other conveyor equipment



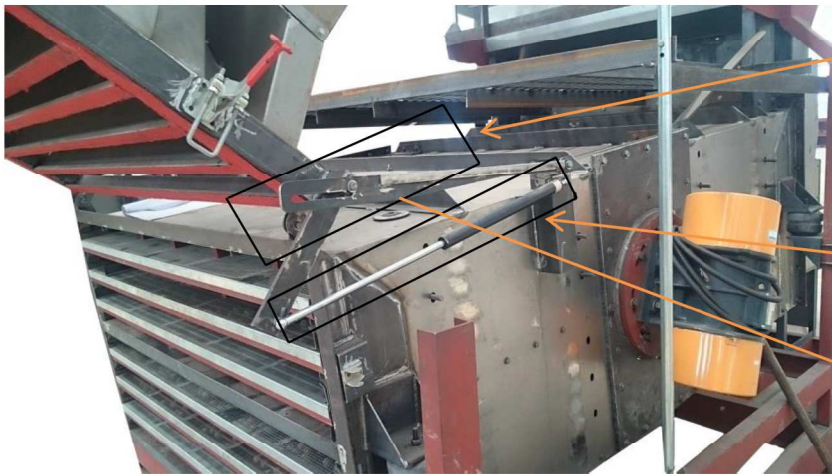
Grain drop into sieving trunk, where all the light weight impurity were took out by aspiration chamber



Mirror of aspiration chamber for observation



Multi sieve layers provide big output capacity
Cleaned grain and impurity discharge from outlet box respectively
There are only three outlets for that big machine, one for the cleaned grain, one for cost product (impurity still valuable) and one for impurity.



Safety locker could fix the big outlet when people change the sieves.

Hydraulic rods can help people lift such a big outlet by one hand.



Excellent mobility



Professional reinforced four wheels (Special Truck Tires) afford high mobility suitable for long distance and high speed transportation.



Standard Australian towing, comply Australian national regulations, double safety protection, easy to connect with your pickup.



Install PTO, could connect with tractor, work outside where without electricity power.

Note: The PTO is equipped at Australia, can't make it in China, because there are no that PTO equipment available in China.



Unique screening and outlet



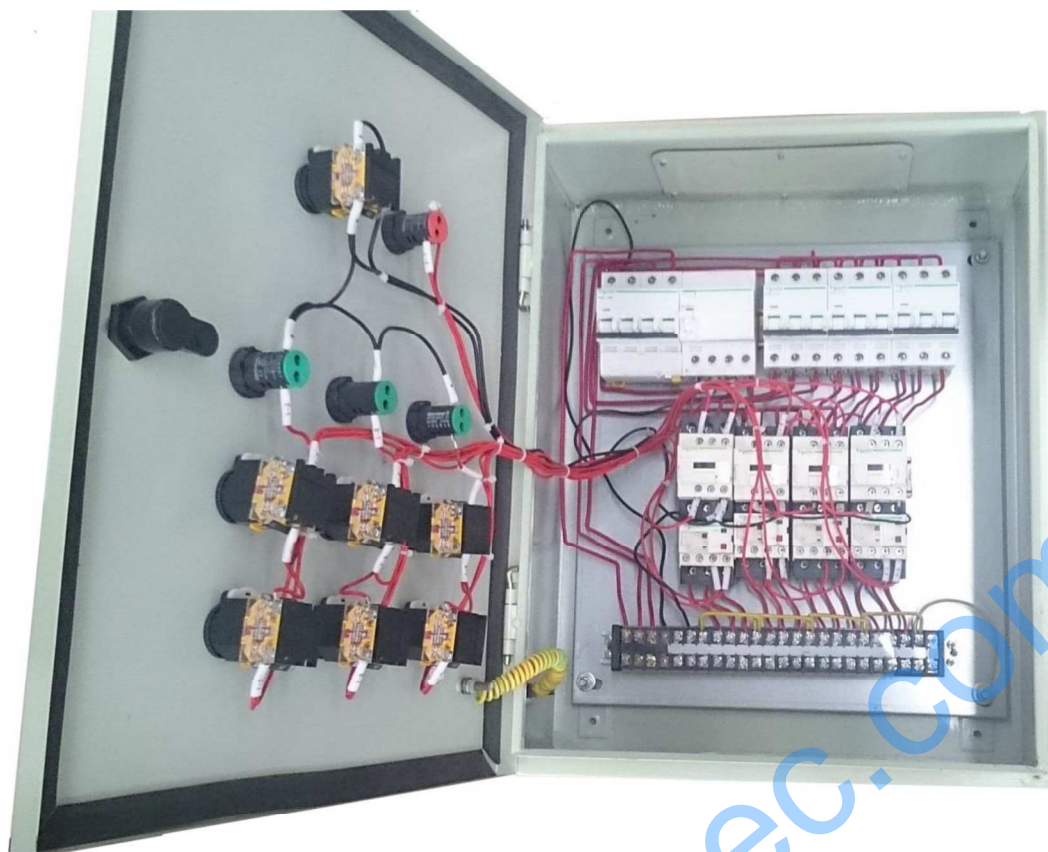
New model grain cleaner creatively adopt deck compounded design, two isolated sieving trunk in one which doubled machine capacity, meet bulk grain cleaning requirement.

Reinforced thicker galvanized sheet,
Professional design, durable constructs,
never deformation

European style galvanized sheet
supporting rubber ball



European standard power distribution



High quality famous brand electric apparatus
Professional wiring mode meets Australian
standard and strict wiring specification

Protective earth wire connected

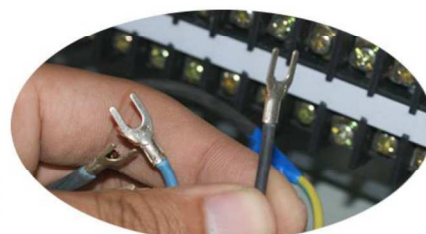
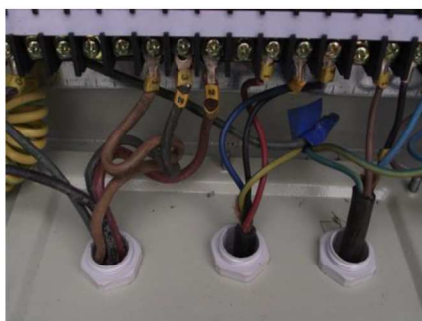
'Emergency Stop' button

Thermal overload relay

Professional fastened wiring with specialized
tools



Schneider electric apparatus

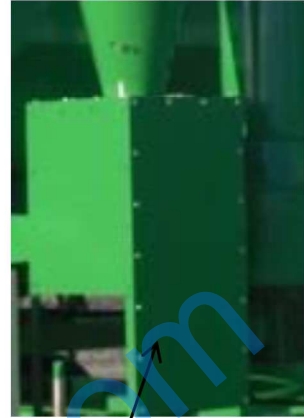


Optimized design

Extra Bigger cyclone for big capacity



Smart clamp on cyclone separator door for fast opening.



Full covered pulley and air lock, meet Australian machine manufacture safety requirement

Unique exhaust pipe direction,
Humanized design



Working condition



Machine in Australia



Model Directory for Seed (Grain) Cleaner & Grader

No.	Model	Capacity (counted by wheat)	Available Sieve Layers (by Customer require)	Wheat Huller	Maize Thresher	Rice deawner	Dust Reducer	Cyclone Dust Separator	Double Air Cleaning Systems	Destoning function
1	5XZC-3A	3 T/H	2-3		✓		✓			
2	5XZC-3B	3 T/H	2-3				✓			
3	5XZC-3C	3 T/H	2-3	✓			✓			
4	5XZC-3DH	3 T/H	2-3					✓		
5	5XZC-3DS	3 T/H	2-3					✓	✓	
6	5XZC-3P	3 T/H	2-3			✓		✓		
7	5XZC-5A	5 T/H	2-4		✓		✓			
8	5XZC-5B	5 T/H	2-4				✓			
9	5XZC-5C	5 T/H	2-4	✓			✓			
10	5XZC-5CDH	5 T/H	2-4	✓				✓		
11	5XZC-5DH	5 T/H	2-4					✓		
12	5XZC-5DS	5 T/H	2-4					✓	✓	
13	5XZC-5DSH	5 T/H	2-4				✓	✓		
14	5XZC-5P	5 T/H	2-4			✓		✓		
15	5XZC-7.5D	7.5 T/H	3-5					✓		
16	5XZC-15	10 T/H	3-6					✓		
17	5XZC-15A	10 T/H	3-6		✓		✓			
18	5XZC-25	20 T/H	4					✓	✓	
19	5XZD-15AC	20 T/H	Double 3					✓		
20	5XZF-5F	5 T/H	2-4					✓	✓	✓
21	5XZF-7.5F	7.5 T/H	3-5					✓	✓	✓

Note :

1. About sieve layer: two sieve layers is basic, normally top layer remove large impurity and bottom layer remove small impurity, add more sieve layer that can grade your seed/grain to different levels by size, such as add one more layer that can grade your seed/grain to two levels (big and small).
2. For 5XZD-15AC has double three sieve layers, which has two isolated sieving trunks installed in one machine, lead to double capacity
3. Dust reducer and cyclone dust separator are all used for collect the light impurity and dust which sucked by air blower, the cyclone dust separator is high technical one which can collect over 98% dust and light impurity, so very low dust release from the outlet of air blower. But the dust reducer only can collect most light impurity and few dust, so there are many dust release from the outlet of air blower.
4. 5XZC-5DSH has dust reducer and cyclone dust separator together, which used to separate the light impurity and dust when the light impurity is valuable, also provide better dust collection at the same time. Most light impurity will be collected by the dust reducer.
5. 5XZC-3DS and 5XZC-5DS has double air cleaning systems which placed at the front and back of the sieving trunk. Double air cleaning systems of 5XZC-25, 5XZF-5F and 5XZF-7.5F are all placed the front of sieving trunk.
6. Double air cleaning systems will lead to better air cleaning result.

We are the best choice for you!

Factory view



We have professional manufacturing equipment!

Drilling and milling machine	CNC lathe	Laser cutting machine
		
Plasma cutting machine	Bending machine	Shearing machine
		

We can provide over sea machine assembly and staff training services!



We have strong production capacity



One time produce 6 sets 5XZD-15AC



One time produce 33 sets QSX-85 Destoner



One time produce 40 sets 5XZ-6 Gravity Separator



One time produce 30 sets 5BY-5B Seed Coating Machine

We have customers all over the world!



Healthy Grain, Pretty Beans, Strong Seed. SYNMEC

We serve for



Shijiazhuang SYNMEC International Trading LTD. and Hebei RUIXUE Grain Selecting Machinery Limited have all the copyright of the information and pictures provided in this leaflet. We have all the rights to do necessary adjustments on the product, and these changes may not reflect on the leaflet at the moment of production.

Address:
Head office: 15th Guangan Street,
Shijiazhuang City, Hebei Province,
China 050011
Manufactory: Huaihe Industry Park,
Hongqida Street, Shijiazhuang City,
Hebei Province, China 050000

Tel: +86 311 676663887
+86 311 89901997
Fax: +86 311 67663887
Mobile: +86 13273161281 (Tony)
Whatsapp: +86 13803340060
Imo: +86 13803340060
Wechat: 13803340060
Email: tony@synmec.com